

COWO!



agrotechnology of the future

cowow.ae



CoWoW



Our method is designed to diagnose preatological and pathological states of different organs and systems of the organism, infections and diseases, using a method of fixing spectral and dynamic characteristics of the object.

The scientific idea, based on our diagnostic method, is that the formation of the risk of the disease begins with the characteristic features of functional processes in the corresponding tissue or system of the organism. These features have a display at the level of wave processes in the body, which leads to the possibility of their spectral-dynamic detection.



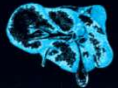
CoWoW



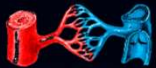
estrus/pregnancy



brucellosis



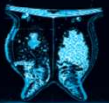
ketosis



leukemia



endometritis



mastitis



The technological basis for the detection of the risk of the disease is the use of a set of profile diagnostic markers and a special algorithm for processing information obtained with the subsequent assessment of the risk of artificial intelligence.

All this allows us to determine the level of risk of the disease (from very low to very high) and identify the disease itself, including its hidden form.

Advantages of our system:

- 1 Reduction of morbidity of subclinic mastite;
- 2 Headband daily monitoring of mastitis risks;
- 3 Diagnosis and monitoring of risks of other diseases;
- 4 Early detection and separation of diseases from healthy individuals for preventive treatment;
- 5 Increase in dairy productivity of cows and improving the quality of dairy products;
- 6 Increase of livestock and reduction of losses due to early slaughter of cattle.





system interface:



online display of health status of the whole pack

dynamics of disease development and health condition of a particular cow

dynamics of disease development and health condition of the whole pack